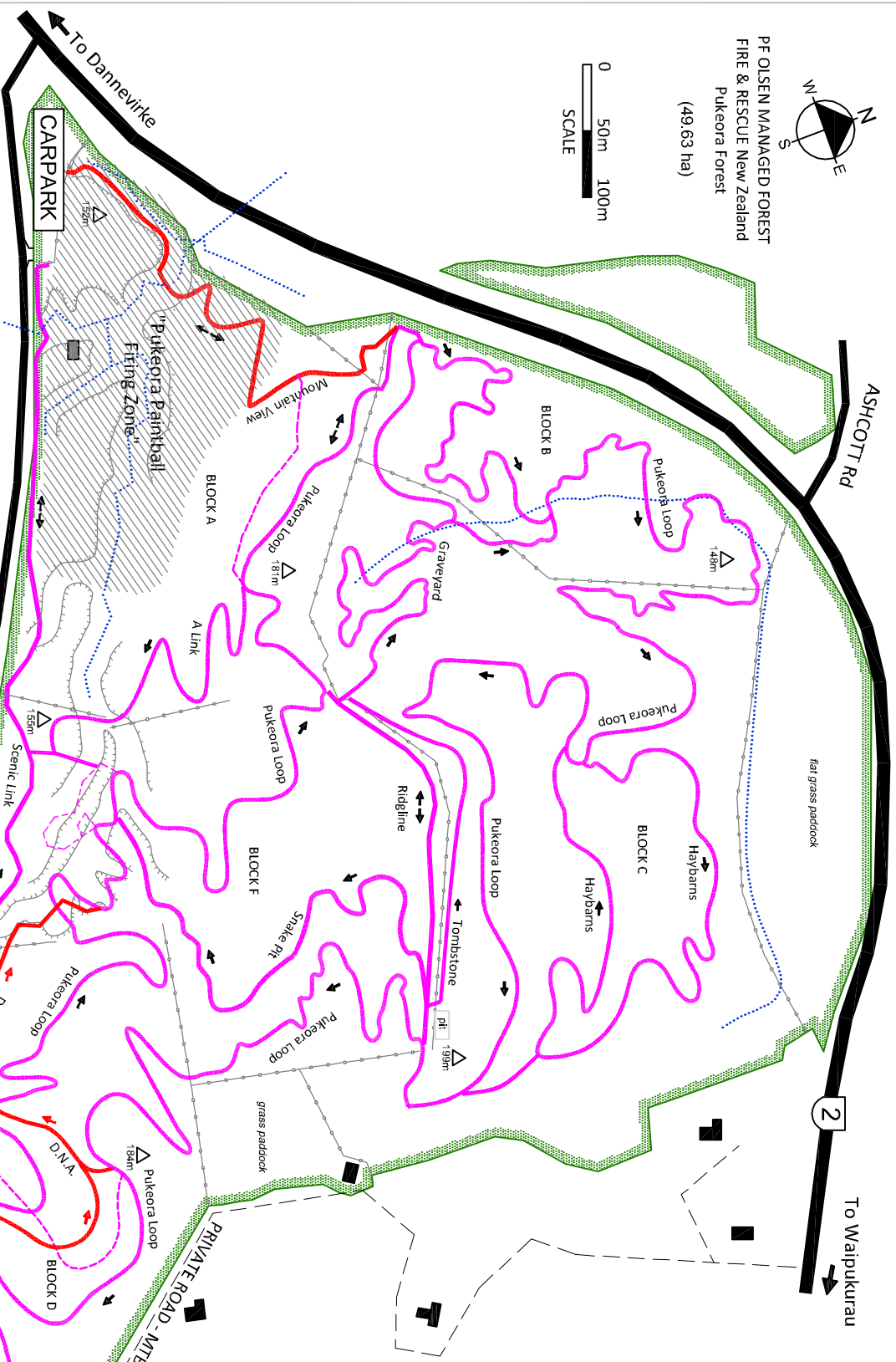




PF OLSEN MANAGED FOREST  
FIRE & RESCUE New Zealand  
Pukeora Forest  
(49.63 ha)



# Pukeora Hill Mountain Bike Park

## Rules for Pukeora Hill Mountain Bike Park

- All access to be via the carpark **ONLY**
- You **MUST** either be a member of the HBM/TBC or hold a valid "3 Week Visitors Permit" to enter the forest.
- All tracks are to be ridden in the direction stated on this map (some trails are 2-way).
- The Pukeora Paintball area (shown shaded) is **OUT-OF-BOUNDS** at all times, except when not in use you can ride thru "Mountain View" track. (This track is **CLOSED** when the Paintball zone is in use).
- Red Flags will fly during Paintball activity, which are seen from the carpark area.
- NB: "Scenic Link" trail is not effected by the Paintball.
- You **MUST** always wear an approved safety helmet and enclosed footwear.
- NO rubbish to be left in the forest.
- NO alterations to existing trails.
- These purpose-built tracks are for Mountain Bikes & Runners only. (Runners must also have a HBM/TBC permit)